

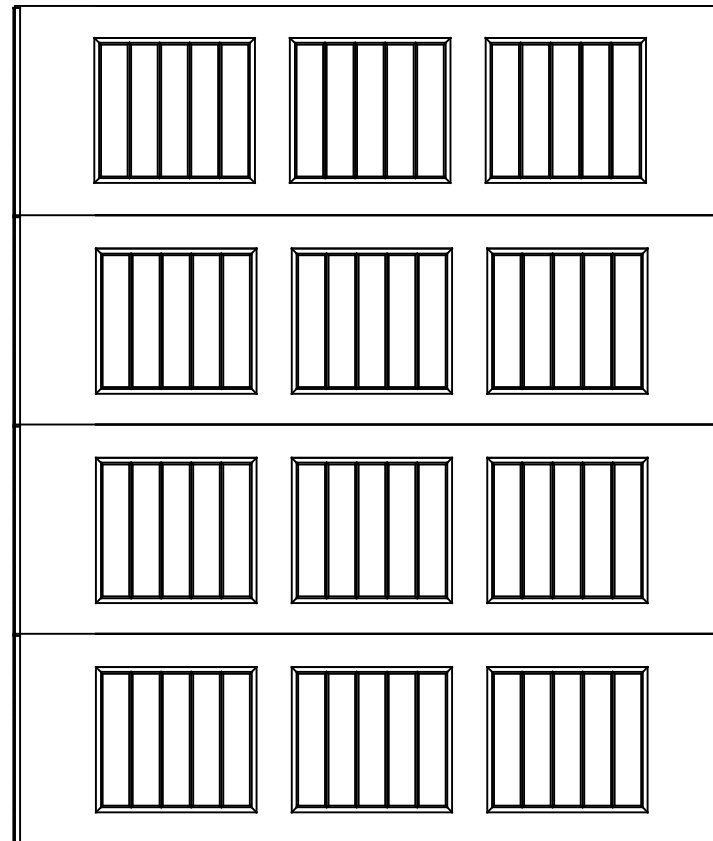


WAYNE DALTON, A DIVISION OF THE  
OVERHEAD DOOR CORP.

## *EXTERIOR VIEW*

WAYNE DALTON CONFIDENTIAL PROPRIETARY  
NOT TO BE DUPLICATED OR REPRINTED WITHOUT  
WRITTEN PERMISSION FROM OVERHEAD DOOR CORP.

[WWW.WAYNE-DALTON.COM](http://WWW.WAYNE-DALTON.COM)



8300/8500 6'9" x 8' SONOMA  
4 SECTION/3 PANEL  
SOLID TOP SECTION  
CONSISTS OF (4) 24" SECTIONS